

NEW PRODUCTS- KUTCH DIGITAL ZONE

Aluminum T4 Backlit Frame

Display Size **Print Size**
A2 – 17.5 x 24.5 inches 16 x21 inches

Print Suitable
Backlit Inkjet

Packing
Cotton Box



Hanging Scroller

Display Size : 3 Feet Width
and Height is Adjustable

Print Size 35" inches

Weight : 4.0 kgs

Suitable Print : Normal Flex

Packing : Rexine Carry Bag



Picnic Table - Wood

Display Size	:	4 x4 feet
Print Size	:	34 x 28 x 56 inches
Weight	:	9.5 kgs
Packing	:	Cotton Box



Catalogue Stand - Black Mesh - Double Stand

Display Size	:	A4 / A3
Packed Size	:	15x12 x5 inches
Weight	:	6.4 kgs
Material	:	Aluminium, Acrylic Stand
Packing	:	Rexine Carry Bag



Catalogue Stand -Metal Mesh

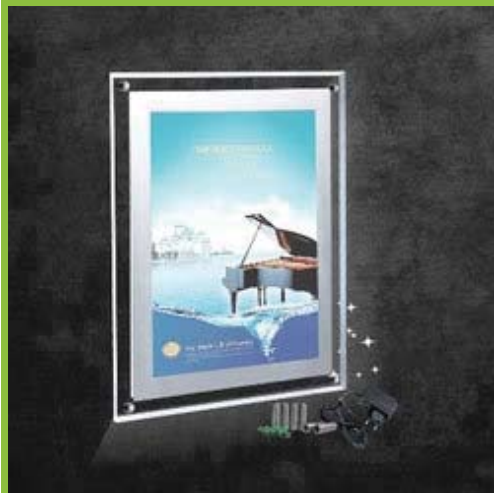
Display Size : A4 / A3

Packed Size : 15x12 x5 inches

Weight : 6.4 kgs

Material : Aluminium, Acrylic Stand

Packing : Rexine Carry Bag



Crystal LED Display Frames

Display Size	Print Size
A0 - 34x47 inchehs	36x50 inches
A1 - 24x34 inchehs	27x37 inches
A2 - 17x24 inchehs	21x28 inches
A3 - 12x17 inchehs	19.5x14.5 inches
A4 - 8x12 inchehs	14x10.5 inches

Suitable Print
Backlit Flim
Packing
Cotton



LED Photo Frame

Display Size

10.5 x 8.2 inches / 8.5 x 6.5 inches

Print Size

A5 – 8 x6 inches /A6 - 6.5 x 4 inches

Suitable Print

Backlit film

Packing

Cotton

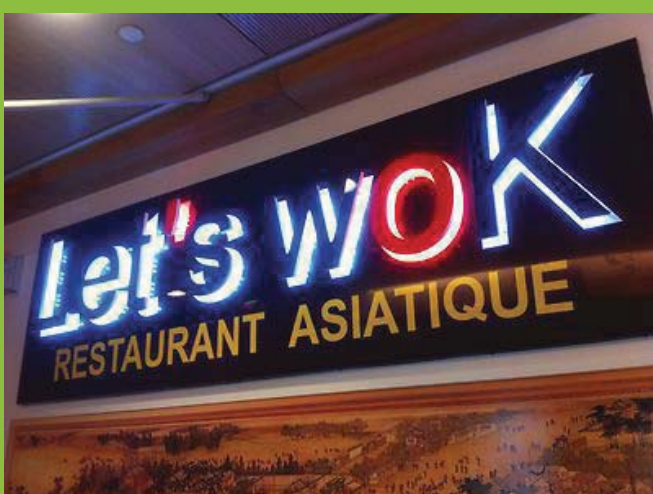


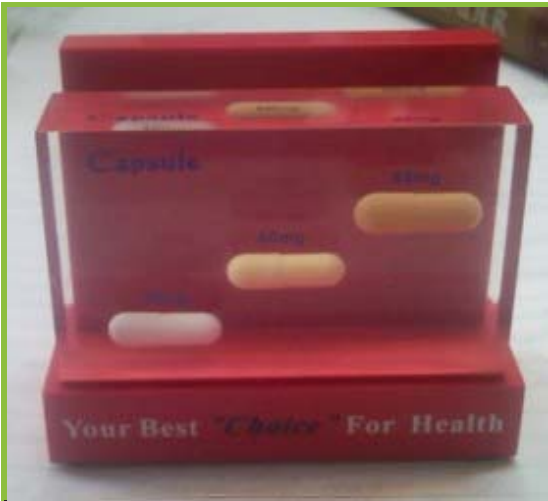
EDGE Light

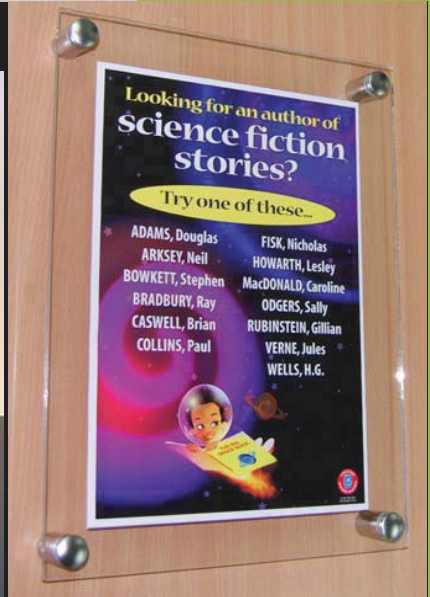
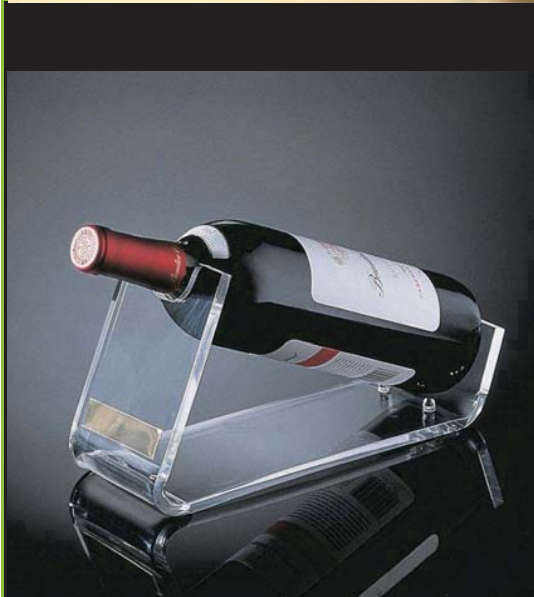
Edge lit signs are simple to set up, and easy to maintain. Edge lit signs give your logo or message a high impact effect. Edge lit signs are excellent for company logos, product promotion, and as counter signs. These light tubes give a neon like glow to 3 / 8" thick engraved, etched, or printed acrylic panels (not included) . These light tubes can be mounted on walls, hung from the ceiling, or standing on a desk. The light tubes are made of aluminum and use cold cathode fluorescent lights.



Light Box Illuminated Display Transparent Film Sign Print





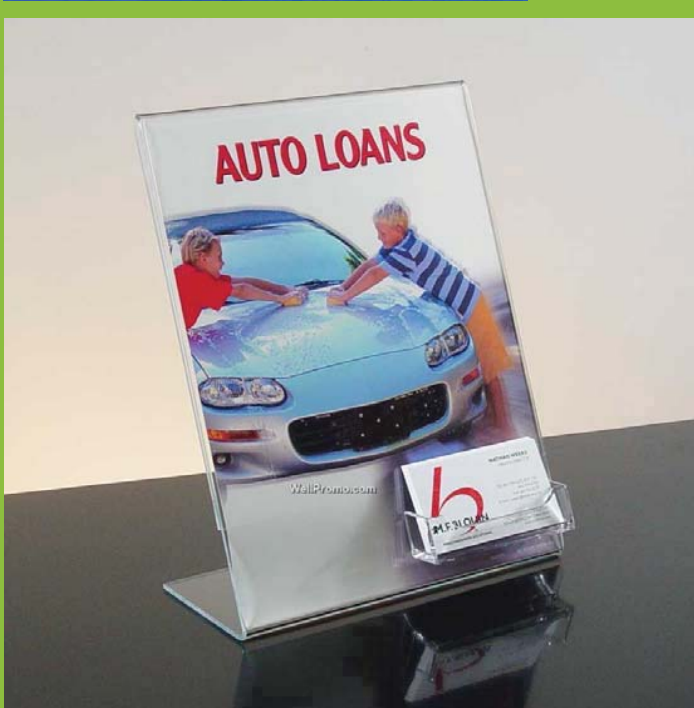


Vertical display stands (K-042 to K-050) for KEJER products.

KEJER logo and text: 歡迎光臨 (Welcome), 歡迎訂購 (Welcome to Order).

Table of specifications:

Item No.	Specification	Quantity for Package
K-042	5.5X9	120/480
K-044	12X10	40/160
K-046	12X18	30/120
K-048	18X25	20/80
K-050	21X29.7	10/40





2 - Sides

Max 288 Pc

Quick LOAD
(Adjustable)

LOCK

360°



Lamà Product Display

A whole range of Point of Sale, Product Display and Kiosk solutions are available in various shapes and sizes.

1. Even the best marketing messages can get lost in translation between the boardroom meeting and the shop floor. The patented Lamà column is the smartest way to ensure the maximum impact of your message at point of sale.
2. Fully customisable, and instantly deployable the Lamà never fails to capture attention. Sizes range from a desktop Mikro to a Maxi Kiosk capable of showcasing a car. Our design team thrives on the challenge of innovation. Any Lamà from our range can be completely tailored to suit your needs.
3. **MORE FOR LESS**
Using the Lamà's remarkable ability to fold down to a flat pack, the shipping volume and weight is significantly less than those of traditional displays. This saves you money and means fewer pallets being shipped, which is good for the environment.

Why the Lamà? Traditional POP displays VS the Lamà

Disadvantages of Traditional Displays

Only 45% of traditional large format POP displays are effectively set up at the point of sale.

- Complicated set-up
- Big, bulky packaging
- Shipping costs can be higher than the display
- Large retail footprint



Advantages of the Lamà Display System

95% of Lamà's are set up at the point of sale thanks to the patented automatic system.

- Set up in store with ease
- Save time and money
- Reduce the cost of transportation and storage
- Small retail footprint











WHAT WE DO

Internal Signage:

1. LED Signage
2. Reception Signage
3. Acrylic Dispensers
4. Acrylic Box Letters
5. Inkjet Print Panels
6. Glass Etching Film
7. Clear Film for Glass
8. 3M / Avery Dennison One way Graphics
9. Wall Graphics
10. Glow Signs
11. Dibond / ACP Make – Stand alone Pylon / Totems
12. Floor Graphics
13. Internal Signage:

14. Metal Pylon

15. Building Directory Signage

Our Services

1. Glow sign board
2. LED Sign board
3. Pylons
4. Way direction boards
5. Hoarding Flex
6. Banner Flex
7. Large Formate led signs
8. ACP signages
9. Vehicle Graphics
10. Retro reflective highway signs
11. Inshop branding
12. Reception logos
13. Exhibition panels
14. Display articles
15. Society wing name board
16. Crystal slim light frames
17. Rollup standees
18. Led writing boards
19. Edge lights
20. Brochure holders

About us

Incepted in May 2003, Kutch digital zone is a renowned complete signage and service solution providers. We have established ourselves firmly in the industry of prestigious

Signage works for various companies. We are also the authorized

Signage convertor for Avery Dennison. Having the expertise and experience in this industry, we deal in

glow signs, Vehicle Branding, Wall graphics, LED signs, mall branding, neon signs, totem pylons, digital prints, 3D letters, ACP signs, corporate signs and ACP cladding.

Our team members talents encompass many specialized aspects of planning skills for the signage, an understanding of architecture, excellent knowledge of signage solutions and the ability to identify a client's needs and accordingly develop the best possible solutions.

VISION

To enhance the beauty the world in harmony with nature.

MISSION

To understand the requirement of the client and provide the perfect match solutions to enhance the efficiency. To Utilize any material at its highest possible applications to provide customers a value for money.

To enhance the efficiency to our staff members so as to execute there 100% capacity and provide the most creative and innovative product to the clients.

Customer management and marketing

This team does not only coordinate with our clients but it takes initiative to understand the clients requirement and provide them with a solution that best fits their budget and marketing or branding objective.

We assured that you are going to get the highest International standards in terms of product design, delivery and quality.

